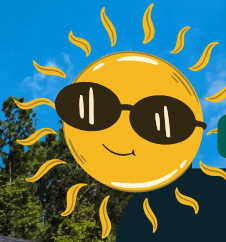


NO ESCALATION CLAUSE

SECURE YOUR *August* MOVE-IN!

JULIETTE
CROSSING

HOMESITE 373



5

3

3,158

SQUARE FEET OF
HEATED/COOLED
LIVING SPACE

HOME PLAN: **BELMONT 'A'**

UNDER FHA LOAN
LIMITS & 100% USDA
FINANCING ELIGIBLE
TERRITORY

\$424,900

- Guest Suite (or the perfect Office Suite) on MAIN
- Two Story Entry Foyer
- **THREE** Car Smart Open Garage with Private Owner's Entry offering built-in cubbies and Smart Panel
- Spacious Step-up Media Room - the perfect flex space!
- Formal Dining Room with designer detail
- Gorgeous Kitchen offering soft-close Diamond 'White' Cabinetry, HUGE Diamond 'Maritime' Accent island, Stainless Steel Appliance Package, Luxury Lighting/Hardware Packages, walk-in pantry, breakfast area
- Spacious Great Room offering wood-burning fireplace with views to Kitchen
- Luxurious Owner's Suite offering separate vanities, 13x13 tiled shower with bench and 2x2 mosaic tiled floor, garden tub, spacious walk-in closet with bathroom **AND** bedroom access
- Upstairs Laundry (Tiled, Of Course)
- Hardwood Floors in all living areas throughout main
- Hardwood Stair Treads, stained to match hardwood floors
- Hughston's Signature Game Day Porch with ceiling fan and fireplace, already pre-wired for your TV with ceiling fan and outdoor speakers
- & much more! TOUR THIS WEEK!



5017 TYBALT RUN FORSYTH, GA 31029

ONLY 45 MINUTES TO THE
HEART OF ATLANTA!

**Hughston
Homes**
Marketing

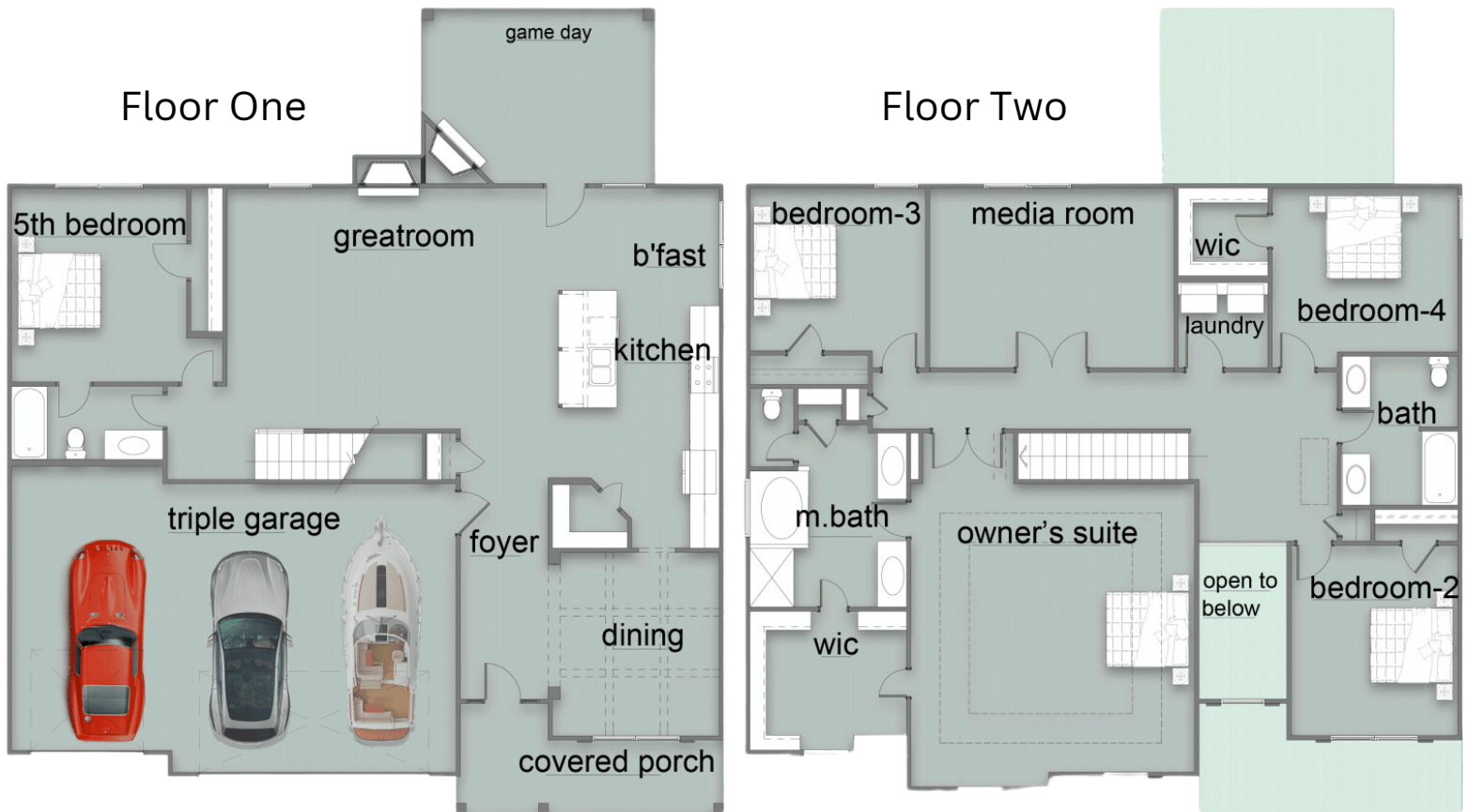


Design
Selections:



REACH OUT!

RICARDO MERRIWEATHER
HUGHSTON HOMES MARKETING
NEW HOME SALES SPECIALIST
LISTING AGENT/AREA MANAGER
DIRECT: (478) 607-5645 (CALL/TEXT)
OFFICE: (706) 568-7650



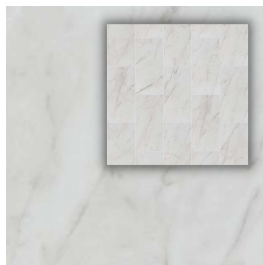
[View More Photos](#)

[Belmont Plan](#)
[Virtual Tour](#)

(for floor plan layout visualization purposes only - design will vary).

PROFESSIONAL DESIGN SELECTION DETAILS

JULIETTE
CROSSING
HOMESITE 373



Altero 'Carrara'

- 13X13 BATH/LAUNDRY TILE
- FIREPLACE SURROUND
- 2X2 MOSAIC SHOWER FLOOR



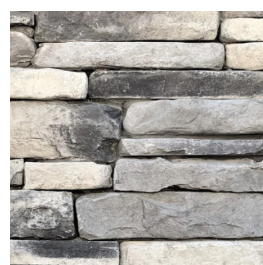
Whisper

- GRACEFUL FINESSE CARPET



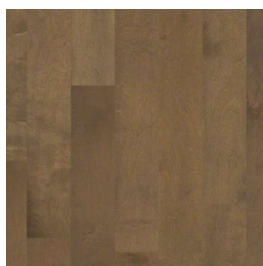
'White'

- 3X6 BACKSPLASH



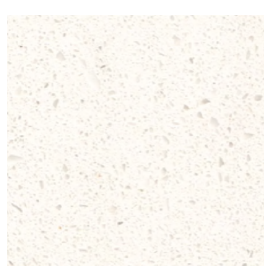
'Aspen'

- GAMEDAY FIREPLACE
- WATER TABLE



Oceanside

- DELRAY HARDWOODS
- STAIR TREAD STAIN TO MATCH



'Frost White' QUARTZ

- BATHROOM COUNTERTOPS



'Arctic Valley' GRANITE

- KITCHEN COUNTERTOPS



'Charcoal'
ROOF



'Escape Gray'

- LAP SIDINGS
- HARDIE ACCENTS
- GARAGE DOOR PANELS



'Alabaster'

- EXTERIOR TRIM PAINT
- GARAGE DOOR TRIM
- PAINTED COLUMNS



'Eider White'

- MAIN INTERIOR PAINT



'Pure White'

- TRIM PAINT



'Gray Matter'

- DINING ROOM ACCENT



'Caviar'

- PAINTED FRONT DOOR
- PAINTED SHUTTERS



'Bleached Wood'

- BACKSPLASH GROUT



'Satin Bronze'

- CABINET PULLS

DESIGNER PRO SERIES

'SATIN NICKEL' Lighting package

